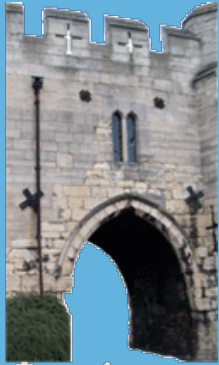


# GATEHOUSE NEWS



Gatehouse

Developments of the Gatehouse Website. The comprehensive bibliography and gazetteer of the castles, fortifications and palaces of medieval England and Wales.

 Follow @castellddu

## 17 July 2017

Another short update.

### Bibliography

The Castle Studies Group annual bibliography arrived a little late this year but I've gone through it and added the relevant citations that I'd previously missed to the various site pages. I'd not missed that much but Catherine Kent's PhD thesis *Beyond the defensible threshold: the house-building culture of Berwick-upon-Tweed and the East March, 1550-1603* from last year (available from [Durham E-Theses](#)) had some interesting content.

A new guidebook by Jeremy Ashbee for Beaumaris Castle has been published by Cadw and Jonathan Foyle has written a 'souvenir guide' for Bodiam Castle for the National Trust. Both add something to the understanding of the respective castles although neither could be considered to 'usurp' the previous guides (by Arnold Taylor and John Goodall)

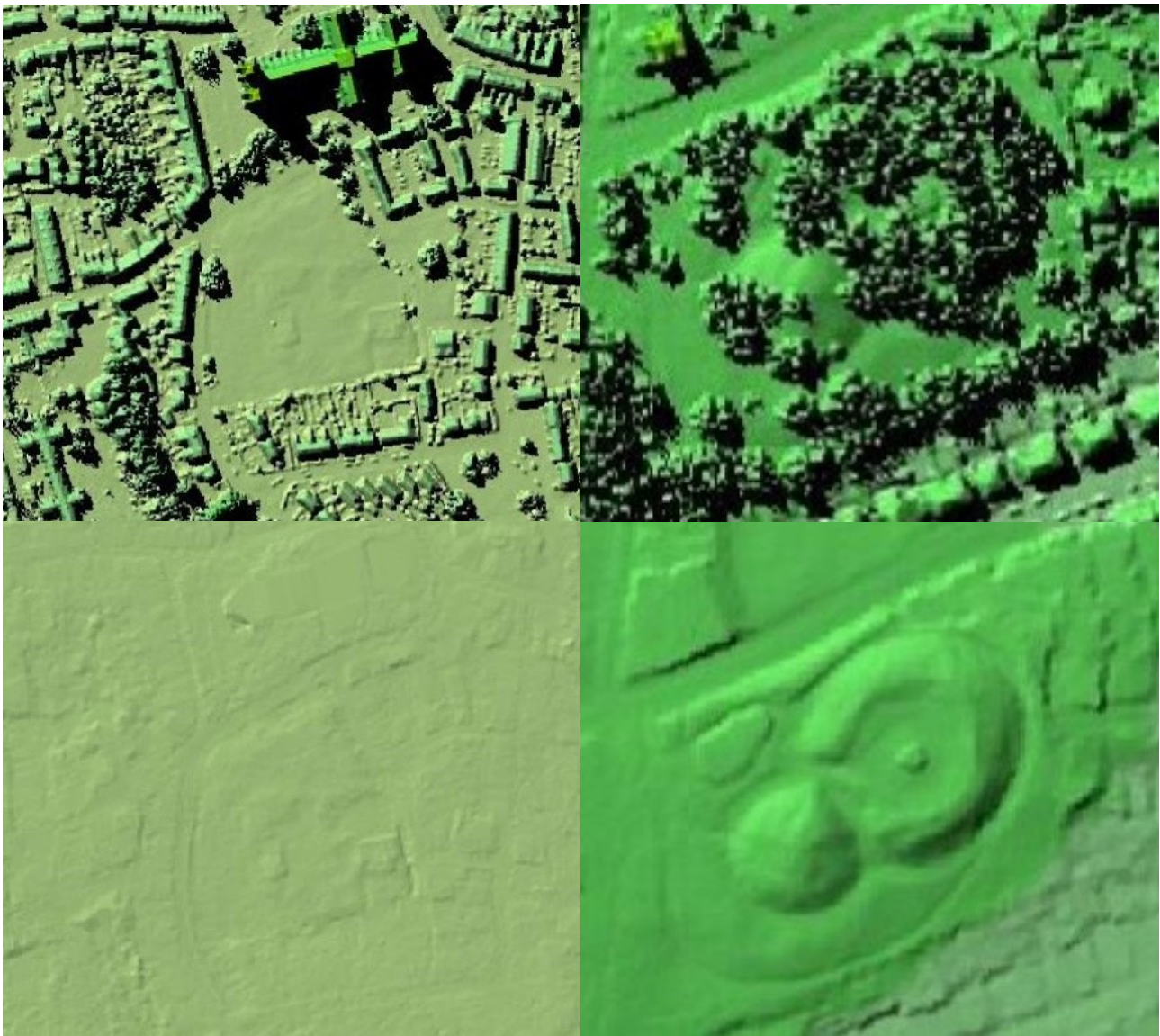
Bodiam has been subject to some more recent study published as *Lived Experience in the Later Middle Ages* (Edited by Matthew Johnson and published by The Highfield Press) which I brought and read but I've been 'instructed' to read Curzon's *Bodiam Castle, Sussex: A Historical and Descriptive Survey* from 1926 to really see how much 90 years of scholarship, on one of the most intensely studied of all English castles, has advanced understanding.

### LIDAR

I've changed the mash up link for the English sites from the previous [houseprices.io](#) map to a new Open Data map made by the [Enfield Archaeological Society](#).

The houseprices image was a simple monochrome image of the 1m DSM (digital surface model) made from the environment agency data, this was clean and gave a good idea of the area covered by the Environment Agency data, which does not cover all of





DSM v. DTM

Left - The bishop palace moat at Beverley. Right - Mexborough castle

England but wasn't, of itself, generally the best image certainly not for overgrown or tree covered sites.

The Enfield Archaeological Society map is a much more complex map with menus that allow a choice of an underlay map and the full set of available LiDAR data at 2m, 1m, 50cm and, the rarely useful, 25cm in both DSM and the generally more useful, DTM (digital terrain model) forms plus some other features like scheduled monument mapping.

This means there is a bit of a learning curve to using this map effectively and, also it takes a good internet speed to work well. Personally I'm not fond of using the brown/green altitude

contouring although that is an old style so familiar to users.

Interestingly both the houseprices and the EAS image use a general convention of making the images shade as if the sun was lighting from the North! Why the silly convention was adopted is rather beyond me.

The button link on the Gatehouse pages will open the EAS map, more or less centred on the site with the 1m DTM LiDAR overlaid with about 50% transparency on the Open Data street map. The 'layers' menu, on the upper right should be clicked to adjust these settings.

Philip Davis